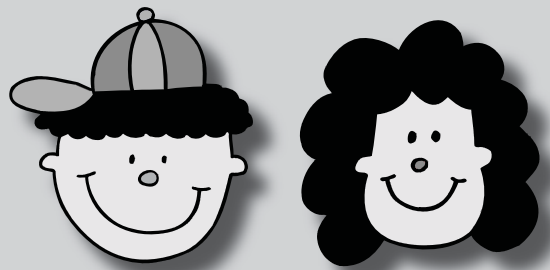




## Mark Your Calendars!

### Family Camp Overnight! August 1st - 2nd

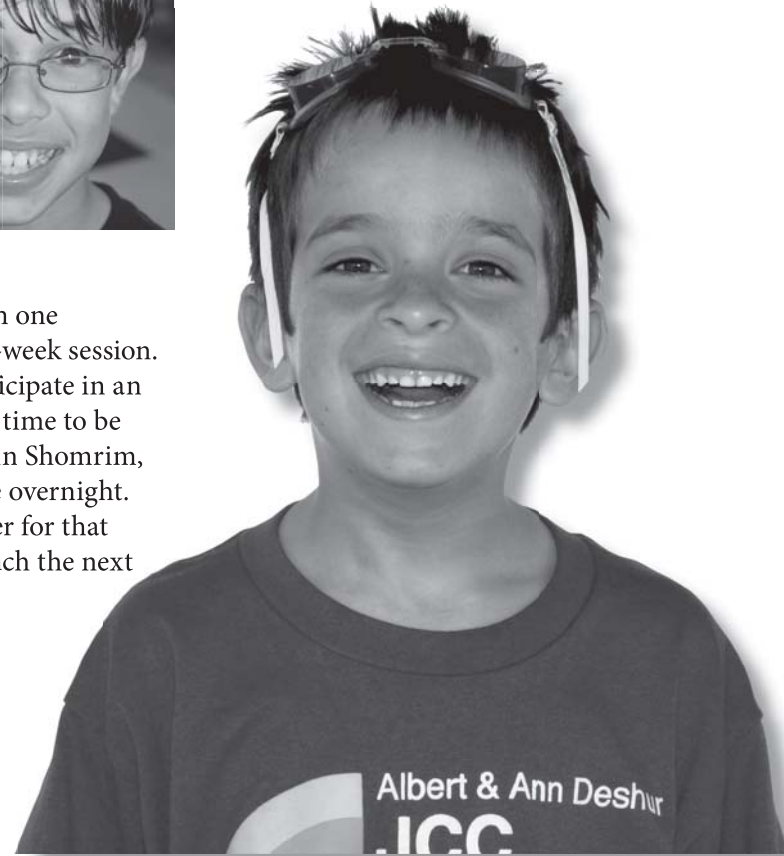
Pitch a tent or stay in the lodge at JCC Rainbow Day Camp in Fredonia. Call **Lenny Kass** at 414/967-8289 for information, or email [lkass@jccmilwaukee.org](mailto:lkass@jccmilwaukee.org)



### PARENT PARTICIPATION

Several special Parent's Days will take place this summer: A Family Shabbat Picnic will be held on Friday, July 17. It will begin at 4:00 p.m. and conclude at 7:30 p.m. The evening will provide a great opportunity for meeting the camp staff, joining in our community-wide celebration of Shabbat and sharing the special feeling of the Albert & Ann Deshur JCC Rainbow Day Camp with your entire family. Additional information will be sent prior to the Shabbat Picnic. On Friday, August 7, we will have a Parent's Shabbat Afternoon. Families can join the campers for lunch and an afternoon of special activities.

During the summer we welcome parent visitations; however, please make sure to call camp 920/994-4614 to check the schedule for the day that you would like to visit.



### News You Can Use!

#### The Albert & Ann Deshur JCC Rainbow Day Camp

Addresses:  
Winter Location:  
Harry & Rose Samson Family  
Jewish Community Center  
6255 N Santa Monica Blvd,  
Milwaukee WI 53217  
(414) 967-8240

Summer Location (After June 1st):  
Albert & Ann Deshur JCC Rainbow Day Camp  
Trails End Road  
Fredonia, WI 53021  
(920) 994-4614

Camping Services Coordinator at the JCC:  
(414) 967-8240.

Director Lenny Kass:  
at the JCC (414) 967-8289  
at Camp (920) 994-4614  
Email: [lkass@jccmilwaukee.org](mailto:lkass@jccmilwaukee.org)

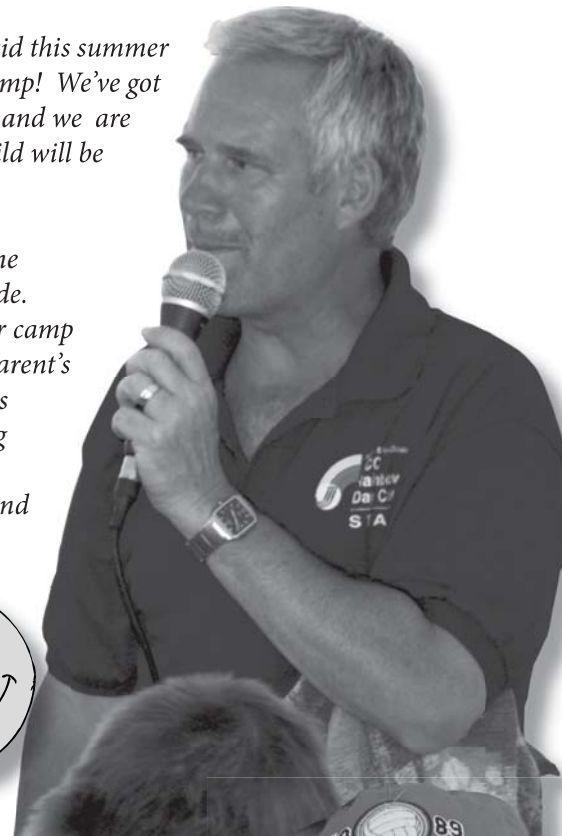
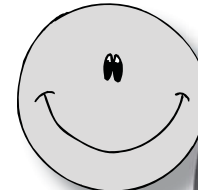
### Welcome!

*There's no better place to be a kid this summer than at JCC's Rainbow Day Camp! We've got a sensational summer planned and we are delighted that you and your child will be part of our camp family.*

*Please read carefully through the information in this Parent Guide. Inside you'll learn all about our camp communications, swimming, parent's program and important policies & procedures. Only by working together can we keep our camp community a safe, wonderful and productive place for kids.*

Keep Smiling,

**Lenny Kass**  
Camp Director



### What To Bring ✓

- ✓ All campers should carry a backpack or bag containing the following items:
- ✓ Swimsuit
- ✓ Towel
- ✓ Bag lunch – due to limited refrigerator space, **NO LARGE LUNCH BOXES PLEASE!** Camp provides snacks.
- ✓ Sunscreen lotion
- ✓ Bug repellent lotion—**NO AEROSOL CANS PLEASE!**
- ✓ Hat
- ✓ Extra clothing – based upon weather conditions
- ✓ Rain gear

### What Not To Bring ✗

- ✗ Electrical appliances - such as a Walkman
- ✗ Items of high value - such as watches, jewelry, expensive cameras
- ✗ Matches, lighters, fireworks of any kind
- ✗ Non-prescription drugs (See - MEDICATIONS paragraph)
- ✗ Baseball/football cards
- ✗ Money\*

*\*Money is not needed at camp. Please help us out by sending no money with your child.*

### TRANSPORTATION

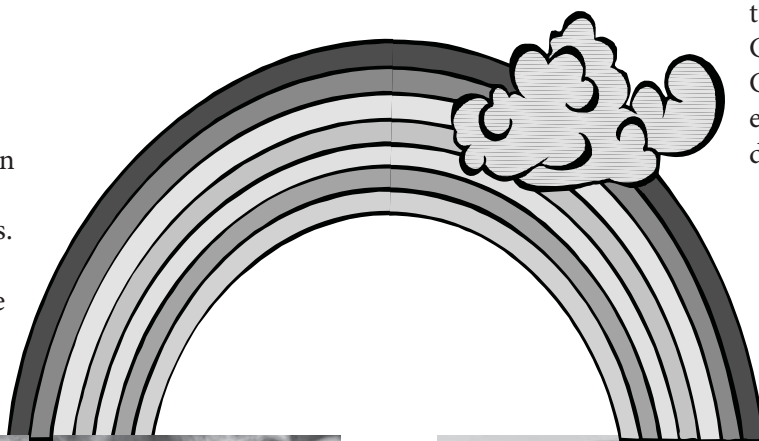
We use the services of Atlas Bus Service. As you may be aware, we have several bus stops located throughout the community. Bus routes and pick-up times vary due to shifts in enrollment. Therefore, the bus route and time information is completed a couple of weeks prior to the beginning of camp. You will receive written confirmation of this information at that time. Bus pick-ups are usually between 8:30 and 9:00 a.m. and drop-offs are between 4:30 and 5:00 p.m. Camp staff are assigned to bus stops, but the primary responsibility for children lies with the parents' cooperation and promptness once the routing and scheduling is established. Once a bus stop is chosen, we ask that no changes be made. We ask that all campers use one bus stop for both a.m. & p.m. This helps us get everyone back on the correct bus. If extenuating circumstances arise, please contact the camp office (414-967-8240) as soon as possible.

### OVERNIGHTS

Campers in Gadnayim participate in one overnight (stay late at camp) per 4-week session. Campers stay until 7:30 p.m. to participate in an evening of fun, leaving camp just in time to be tucked into bed at home! Campers in Shomrim, Chalutzim and Tsofim will have one overnight. Camp provides everyone with dinner for that evening, as well as breakfast and lunch the next day.

### TIPS AND GRATUITIES

It is a long-established policy of the Albert & Ann Deshur JCC Rainbow Day Camp to discourage tipping or gift giving to individual staff members. However, gifts to the Camp Scholarship Fund or the Friends of JCC Rainbow Day Camp Fund are appreciated and are a benefit to the total camp program.



### EARLY PICK UP PROCEDURES

To ensure the safety of your camper, Rainbow Day Camp has the following procedures for early pick up from camp:

- All early pick ups must be requested in writing, or by phone by 3:00 pm that day.
- No cars can drive into camp after 3:15 pm for pick up. You will need to meet your camper at the pool building.
- End of the day pick ups will be at the pool building.



## Keeping the Lines of Communication Open Between Camp and Parents

**When can you call us?**  
*Anytime!* 920-994-4614

**When can you email us?**  
*Anytime!* [rdcamp06@yahoo.com](mailto:rdcamp06@yahoo.com)

Please feel free to contact the camp director anytime throughout the summer to ask questions about our program, to discuss how your camper is doing, or to share information you feel we should know.

## What we need to know. SENDING NOTES TO CAMP

For the safety of all campers, camp requires parental notification/consent when campers are being picked up early, going home with a friend or missing camp. Please send notes in your camper's clear zip pack, give to a staff member at the bus stop, or have your camper put the note in the "Love Bucket" at assembly in the morning.

Not coming to camp today? Or, coming to camp late? Please call attendance hotline at 920/994-8524 by 8:00 am, or email camp at [rdcamp06@yahoo.com](mailto:rdcamp06@yahoo.com)

## SESSION LETTERS

Prior to each session, you will receive a letter with bus departure and returning time information, as well as any other pertinent facts you should know to help make the transition to camp an easy one for your child.

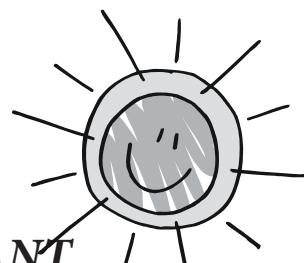
## NEWSLETTER

Each week campers will bring home a newsletter. This will also be posted online [www.jccmilwaukee.org](http://www.jccmilwaukee.org)

## RAINBOW DAY CAMP WEBSITE

Group activity, schedules, special programs and daily programs will be listed on the Rainbow Day Camp Website, which you can access through the JCC's site [www.jccmilwaukee.org](http://www.jccmilwaukee.org)

## Safety First!



### SUNSCREEN/BUG REPELLANT

Camp staff will assist and remind campers to apply sunscreen before swimming and at "sun screen time" after lunch. Please remember to pack a bottle of sunscreen every day. When campers go into areas where bug repellent is necessary, camp staff will assist in applying it.

A word about Lyme's Disease: At Albert & Ann Deshur JCC Rainbow Day Camp, we are very concerned for your child's health and safety. The following precautions will be taken at camp to help prevent any contact with ticks: bug repellent, long sleeves and pants will be worn on all hikes. We will stay on the cut grass or wood chip paths at camp. Parents and camp staff will work together to watch for any symptoms. We want kids to enjoy camp and with these precautions, everyone will remain safe!

**ILLNESS POLICY** If your child becomes ill at camp, you will be notified immediately so you can make arrangements to have your child picked up within the hour. If your child develops any of the following symptoms during the camp day, you will be called to pick him or her up:

- Fever of 99.5 degrees or higher.
- An illness that prevents the child from participating comfortably in activities.
- An illness that calls for greater care than staff can provide, compromising the health and safety of other children.
- Conjunctivitis or "Pink Eye" (*camper must stay home until 24 hours after treatment has been initiated*).
- Head lice (*camper must stay home until nit free*).
- Strep throat (*camper must stay home until 24 hours after treatment has been initiated*).

### MEDICATIONS/MEDICAL CONCERNS

Medications, prescription or over-the-counter, can only be administered with written permission from the parent. Please call for an "Authorization to Administer Medication Form," which is required by state law. No medications, prescription or over-the-counter, will be accepted unless they are in their original container with specific instructions, your child's full name and the physician's name. If there are any other medical considerations and/or concerns, please be specific on your child's health history form. If there are any activities that your child cannot participate in due to health concerns, please be specific in this area.

## Questions?

Before June 10, call 414/967-8240  
After June 10, call 920/994-4614  
Email to [lkass@jccmilwaukee.org](mailto:lkass@jccmilwaukee.org)

## Swimming

Our waterfront program is staffed by WSI/LGT (Water Safety Instructors/Life Guard Training) personnel. We have 2 nice swimming facilities. We hold our swim lessons in our in-ground pool and hold free swim in the *Agam* (man-made lagoon). Swim checks - campers will be swim checked on the first day of their camp. Campers will wear a "free swim wristband" and also be placed in a swim level for lessons. Swim wristband definitions are: Red - non swimmer, very shallow water; Yellow - limited swimming ability, shallow end of pool and Green - swimmer - can use the entire pool.

**The swim program is divided into three categories:**

- 1. Red Cross Levels Instruction:** This is a full instructional program open to 3-day campers registered for a full session and 5-day campers registered for either the full session, the 1st two weeks or the last two weeks of a session.
- 2. Swim Instruction:** This program is designed to help campers develop additional swim and safety skills and is open to campers not meeting the Red Cross levels registration requirements as well as campers not interested in the levels program.
- 3. Free Swim:** On hot days and for special programs, campers will have the opportunity to enjoy the *Agam* and all it has to offer! Also, groups that do not have swim lessons will have a free swim in the pool.

It is important to bear in mind that swim lessons at camp, because of our dependence upon weather and the added component of fun, cannot take the place of intensive private lessons in an indoor setting. Our standards for passing from one swim level to the next are higher than most pool programs. We strongly enforce our rules on swim placement for the safety of your child. Please bear this in mind if your child has passed a certain level elsewhere and is placed differently at JCC Rainbow Day Camp. Our final determination will always be based on what we believe is SAFE and APPROPRIATE for your child in OUR setting. If you feel your child is placed in the wrong level, please call camp and your child will be re-tested.

## BOATING

Boating activities are supervised by our Waterfront Staff who are certified Red Cross Lifeguard trained. All campers, regardless of age, wear life jackets. Boating safety skills, creative games and floating lunches are some of the activities in which campers participate.



## What's for LUNCH?

You should pack a lunch every day for your child, including beverages. Camp is equipped to make a nutritional lunch in the event that a child forgets to bring one. We do ask that you try to pack a kosher-style bag lunch (no pork or shellfish). We do provide refrigeration for all lunches. We supply daily snacks and several cookouts throughout the season. Water is available at all times on the camp ground. Due to limited refrigeration space — no large lunch boxes please! Campers may bring water bottles. Campers are asked not to share lunches or bring treats to share with the group to avoid possible issues with allergies and dietary restrictions.

### BAG LUNCH PROGRAM

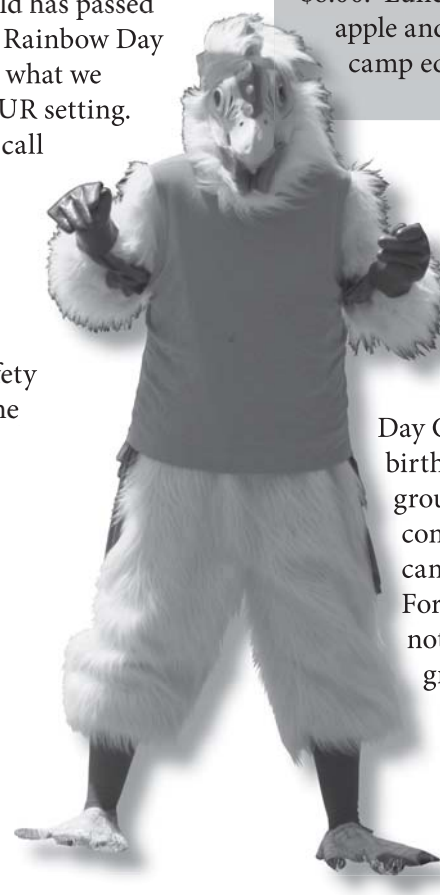
Campers may buy a kosher bag lunch, made by *Café Osher*. The fee is \$5.00 per lunch. Please see flyer, or check website for details.

### FRIDAY SHABBAT HOT DOG LUNCH

Every Friday camp sells a Hot Dog Lunch for \$6.00. Lunch includes hot dog, pickle, chips, apple and fruit roll-up. Proceeds go toward camp equipment.

## Birthday at Camp

Birthdays are big fun at Rainbow Day Camp! Parents can purchase a birthday treat for \$20 for your child's group. Also, the *Birthday Chicken* will come and sing to him/her. Please call camp or send a note to the camp office. For the safety of all campers, please do not send treats for your child's camp group.



## CLOTHING

Clothing for camp is obviously very casual since outdoor play is the name of the game. Shorts, T-shirts and athletic shoes are most appropriate. No sandals please! **All clothing must be clearly marked with the camper's full name.** Although there is a lost and found at camp, we can assume no responsibility for lost items. Campers may choose to bring extra supplies in a backpack, but the items may not be left at camp.

## EXTENDED CARE FOR WORKING PARENTS

Extended care is available at the JCC and Beth El Ner Tamid Synagogue in Mequon. The available hours are from 7:00 am. until the camp bus departs. After camp care is available until 6:00 pm. in the evening (5:30 pm. on Fridays). The cost for extended care is \$6.00 per day or \$22/week for either early or late care. Or, both early & late care are available for \$8 per day or \$32 per week. Parents are billed for usage at the end of the month.

If you are interested in extended care, please call camp at (920) 994-4614.



## FEES

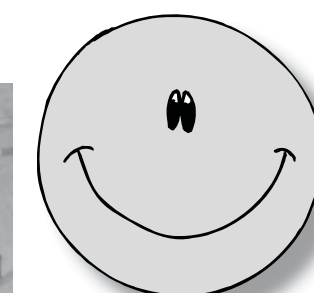
All fees MUST BE PAID IN FULL BY JUNE 1, 2009. Also, all medical forms must be completed and turned in before the first day of camp. It is our policy NOT to permit any camper to board the bus unless all fees are paid and medical forms are turned in. Any special arrangements regarding fees must be made IN ADVANCE of your child's first day of camp.

## FORMS

The following forms are included in the parent's packet. If you did not receive any of the following forms, please contact the Camping Services Coordinator at the JCC, (414) 967-8240. All forms are due one week prior to the beginning of the session.

- 1. Child Enrollment and Health History Form** - 2 sided
- 2. Day Care Immunization Record** - needs to be signed by physician only if all immunizations are not met
- 3. Camper Questionnaire** (*to be completed by parent*)
- 4. Authorization Form**
- 5. Bus Emergency Form**
- 6. Early and Late Care Form** (*if needed*)
- 7. Extras at Camp Form**
- 8. Hot Dog Lunch Form**

**Children will not be allowed to attend camp if completed health forms are not on file.** Please complete all forms thoroughly and make sure that they have been returned at least one week prior to the beginning of your child's camp session. Forms should be returned to the Rainbow Day Camp office, 6255 N. Santa Monica Boulevard, Milwaukee, WI 53217.



# Keep Smiling